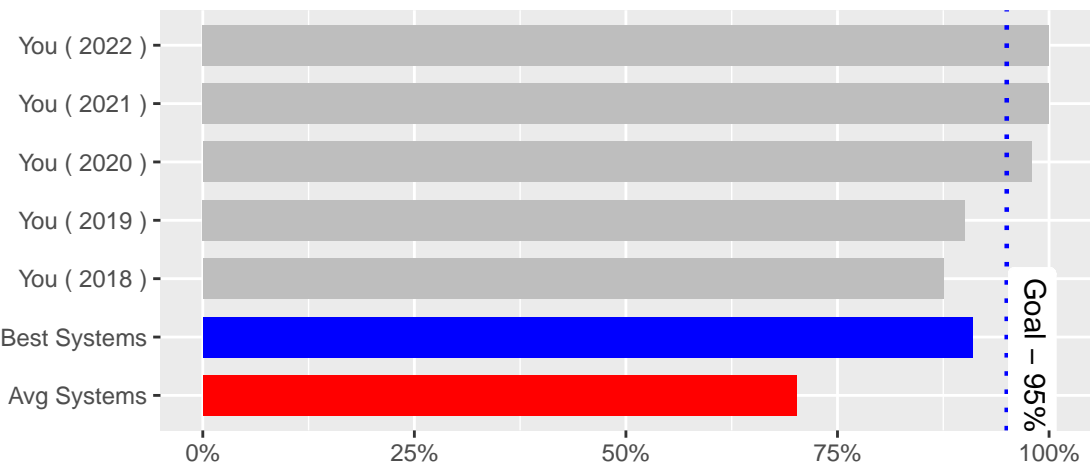


2022 Annual Combined Filter Effluent (CFE) Turbidity Performance Snapshot

PWSID: WY5600044 , PWS Name: Town of Ranchester
 Filtration type: Conv or Dir Filtration, Population Served: <10,000

Percent of days you met the CFE optimization goal of 0.1 NTU



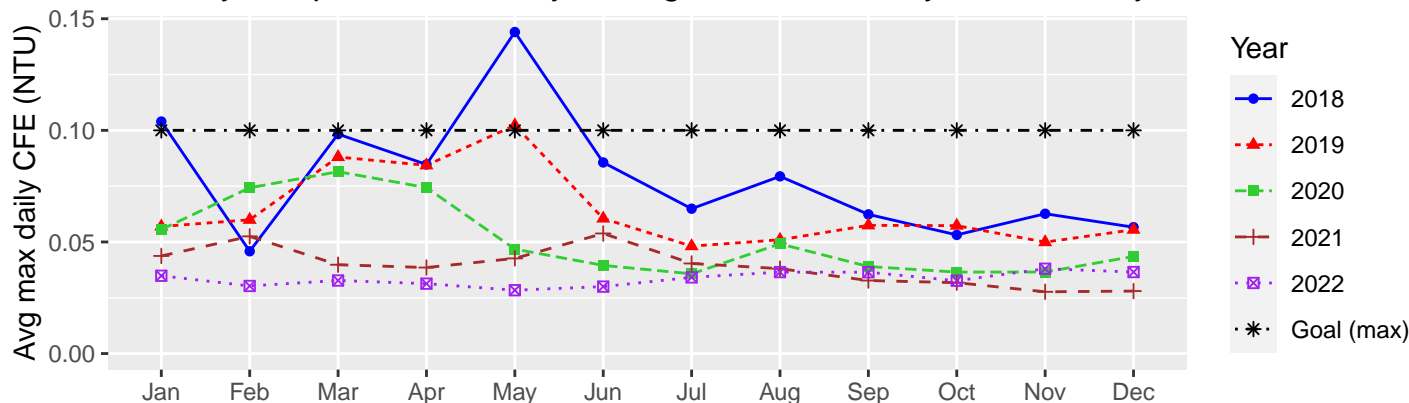
How are you doing?

Great, better than average!

Who are the other systems?

Systems in Wyoming or Region 8 Tribal lands that use conventional or direct filtration to treat a surface water or ground water under the direct influence source, and serve a total population of less than 10,000. Best systems are the top 25% of systems in this group. Average systems reflect the average of all systems in this group.

Yearly comparison, monthly average maximum daily CFE turbidity



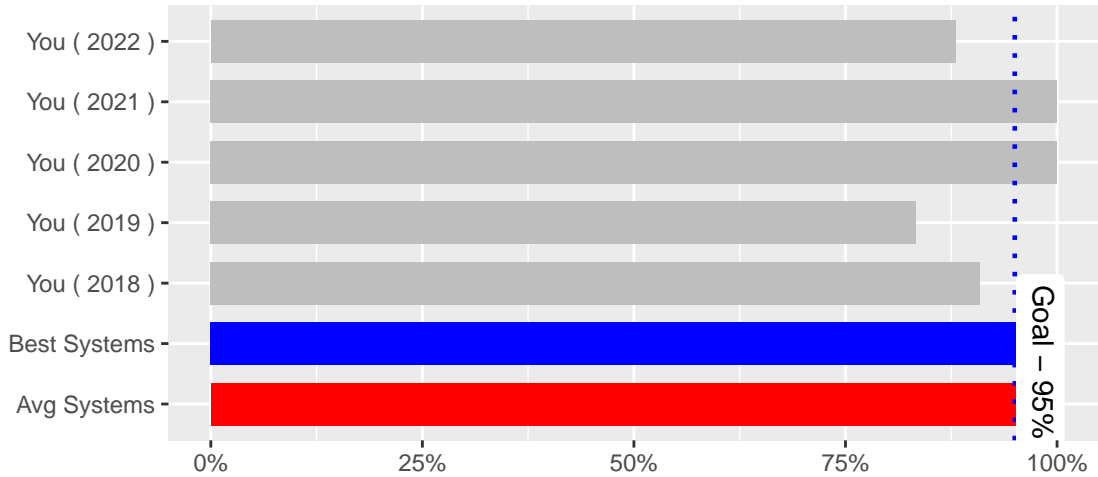
Note: The combined filter effluent (CFE) turbidity optimization goal for conventional / direct filtration plants is a CFE turbidity of less than 0.10 NTU in 95% of the maximum daily turbidity readings during the calendar year.

2022 Annual Distribution System Disinfectant Performance Snapshot

PWSID: WY5600044 , PWS Name: Town of Ranchester

Disinfectant type: Free Chlorine, Community System

Percent of days you met the distribution disinfectant optimization goal of 0.2 mg/L



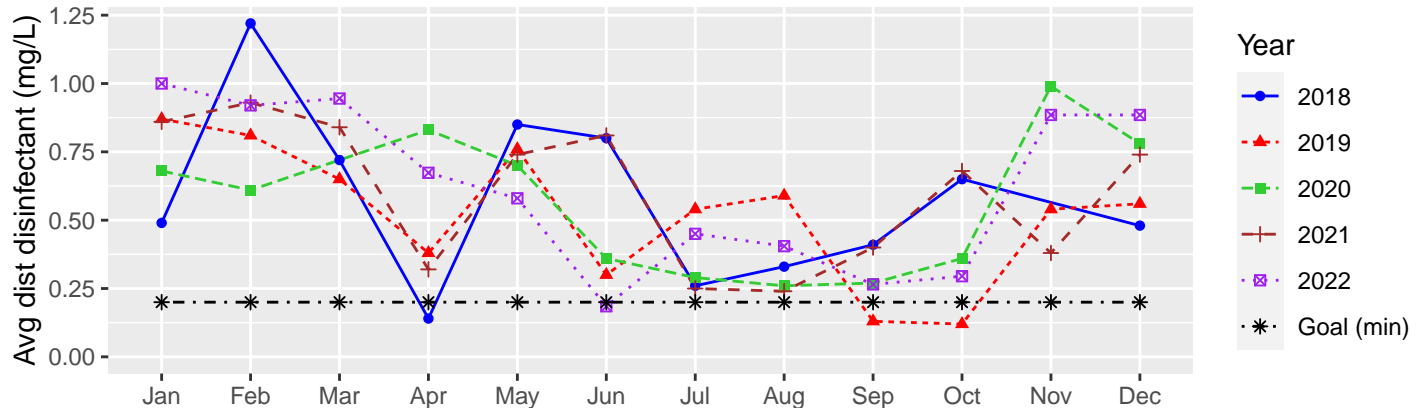
How are you doing?

Good, about average.

Who are the other systems?

Community systems in Wyoming or Region 8 Tribal lands that use a surface water or ground water under the direct influence source, and use free chlorine as a secondary disinfectant. Best systems are the top 25% of systems in this group. Average systems reflect the average of all systems in this group.

Yearly comparison, monthly average distribution disinfectant (mg/L)

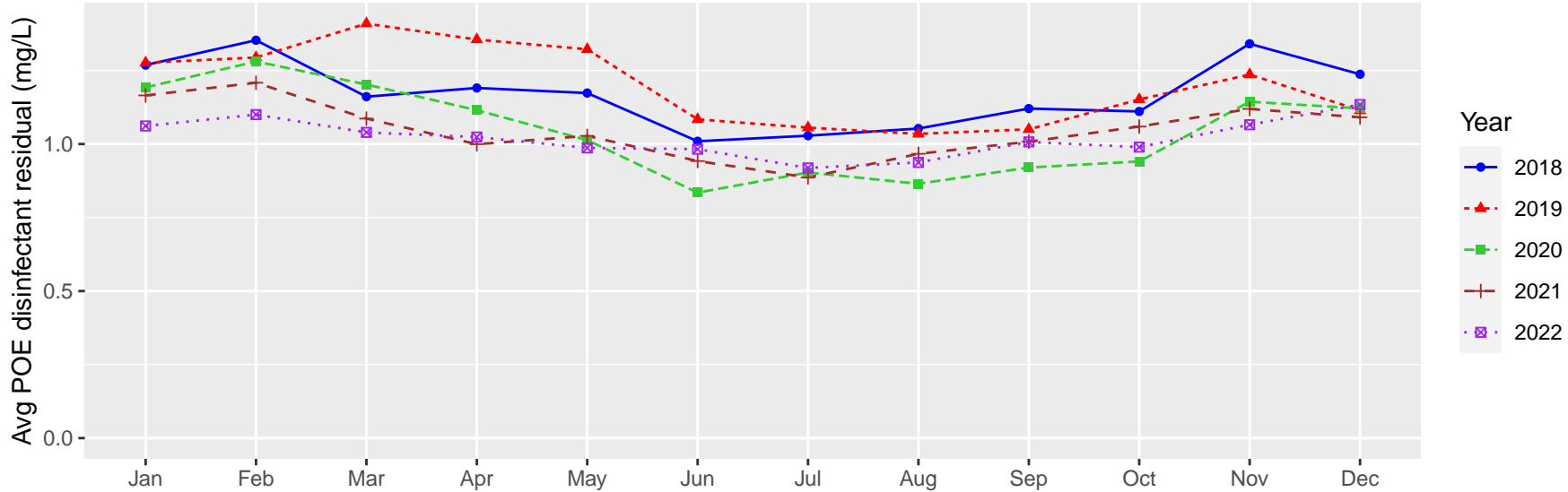


Note: The distribution system free chlorine optimization goal is a residual of greater than 0.2 mg/L throughout the distribution system.

Annual Disinfection Performance Snapshot, 2022, Point of Entry (POE) vs Distribution

PWSID: WY5600044 , PWS Name: Town of Ranchester

Yearly comparison, monthly average POE disinfectant residual (mg/L)



POE vs distribution system disinfectant comparison – 2022

